

CSP Series Control Station Enclosures

Features

- Designed to accept 22mm or 30mm oil tight pushbuttons, switches and pilot lights
- Provides protection from dirt, dust, oil and water
- Best compatibility with SUNS 22mm/30mm pushbuttons

Specifications

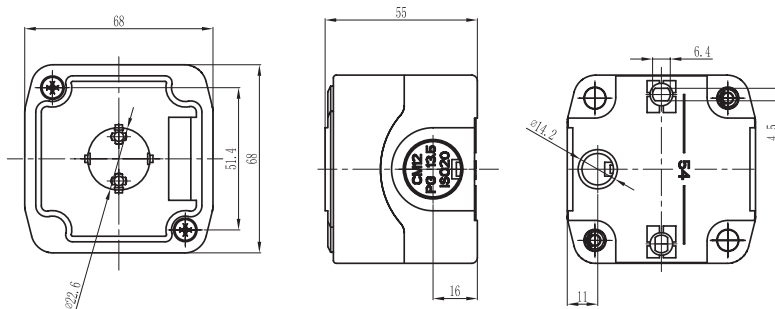
Housing Material	Glass Fiber Reinforced Plastic
Industrial standards	NEMA Type 4, 4X, 12 & Type 13
	UL Listed Type 4, 4X & 12
	CSA Type 4, 4X & 12
	IEC 60529, IP65

Selection Guide:

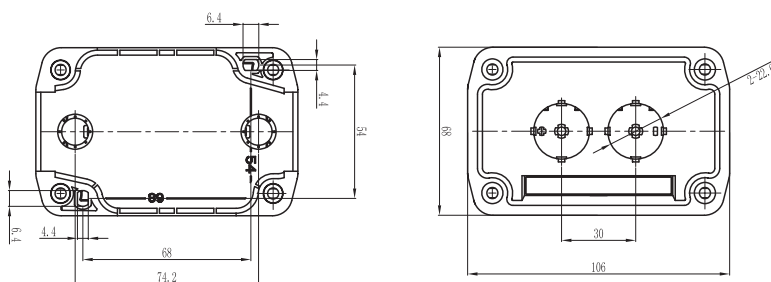
CS	P	-	30	01	-	A
	Enclosure Material		Hole Size	Number of Holes Up to 05		Conduit
	P: Glass Fiber Reinforced Plastic		30: 30mm 22: 22mm			A: 1/2" NPT B: PG13.5 C: M20 F: 3/4" NPT

Pictures and Dimensions:

CSP-2201-B



CSP-2202-B



CSP-2203-B

